



INDOFINE Chemical Company, Inc.

121 Stryker Lane, Bldg. 30, Suite 1 • Hillsborough, NJ 08844 • U.S.A.

Phone: (908) 359-6778 • FAX: (908) 359-1179

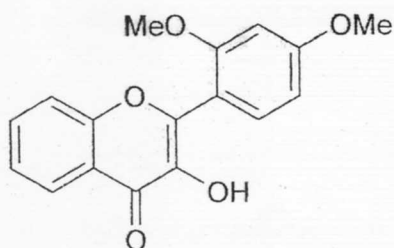
website: www.indofinechemical.com

e-mail: chemical@indofinechemical.com

CERTIFICATE OF ANALYSIS

Cat No.: 22-211

<u>Product:</u>	2',4'-DIMETHOXY-3-HYDROXYFLAVONE
<u>Lot Number:</u>	98139
<u>CAS No.:</u>	[95382-87-9]
<u>Molecular Formula:</u>	C ₁₇ H ₁₄ O ₅
<u>M.W.:</u>	298.30
<u>Melting Point:</u>	198-201°C
<u>Appearance:</u>	Cream color powder
<u>TLC:</u>	Hexane:Ethyl acetate (1:1)
<u>Solubility:</u>	Soluble in chloroform
<u>Purity(HPLC):</u>	99.31%





INDOFINE Chemical Company, Inc.

121 Stryker Lane, Bldg. 30, Suite 1 • Hillsborough, NJ 08844 • U.S.A.

Phone: (908) 359-6778 • FAX: (908) 359-1179

website: www.indofinechemical.com

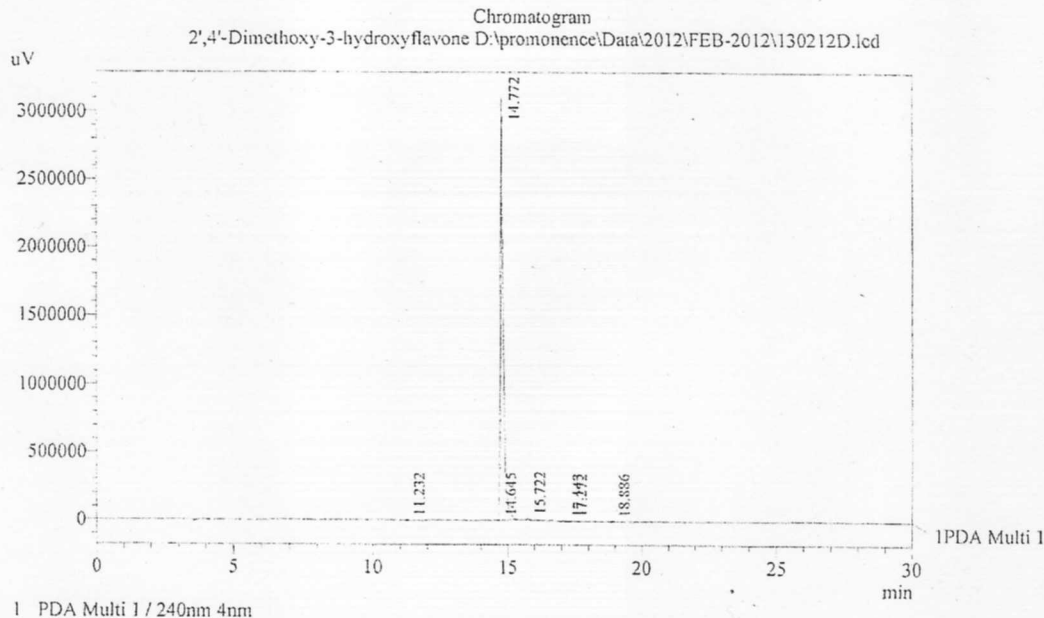
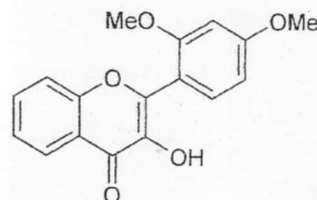
e-mail: chemical@indofinechemical.com

HPLC ANALYSIS

Acquired by : Sanjeev
Sample Name : 2',4'-Dimethoxy-3-hydroxyflavone
Sample ID : Lot No:-98139
Injection Volume : 20 uL
Data Filename : 130212D.lcd
Method Filename : Linear Gradient.M.lcm

Catalog No.: 22-211
Product name: 2'-4'-Dimethoxy-3-hydroxyflavone
Lot No.: 98139

Date Acquired : 2/13/2012 12:08:52 PM
Data Processed : 2/13/2012 12:53:20 PM
Column : LUNA C-18(2), (250mm x4.6mm 5.0µ)
Flow : 1.000 mL/min.
Mobile Phase : A(0.05% TF^v in water) B(Acetonitrile)
0.01 90 10
12.0 10 90
20.0 10 90
25.0 90 10
30.0 90 10



1 PDA Multi 1 / 240nm 4nm

PeakTable

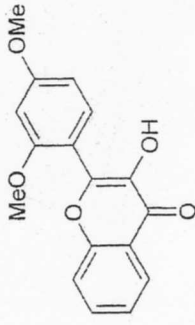
PDA Ch1 240nm 4nm

Peak#	Name	Ret. Time	Area	Area %	Relative Retention Time
1	RT:11.232	11.232	7963	0.04	0.76
2	RT:14.645	14.645	16336	0.08	0.99
3	RT:14.772	14.772	21092862	99.31	1.00
4	RT:15.722	15.722	105692	0.50	1.06
5	RT:17.143	17.143	2474	0.01	1.16
6	RT:17.272	17.272	6952	0.03	1.17
7	RT:18.886	18.886	8153	0.04	1.28
Total			21240431	100.00	



INDOFINE Chemical Company, Inc.
 121 STRYKER LANE
 BLDG. 30, SUITE 1
 HILLSBOROUGH, NJ 08844

Catalog No.: 22-211
 Product name: 2'-4'-Dimethoxy-3-hydroxyflavone
 Lot No.: 98139

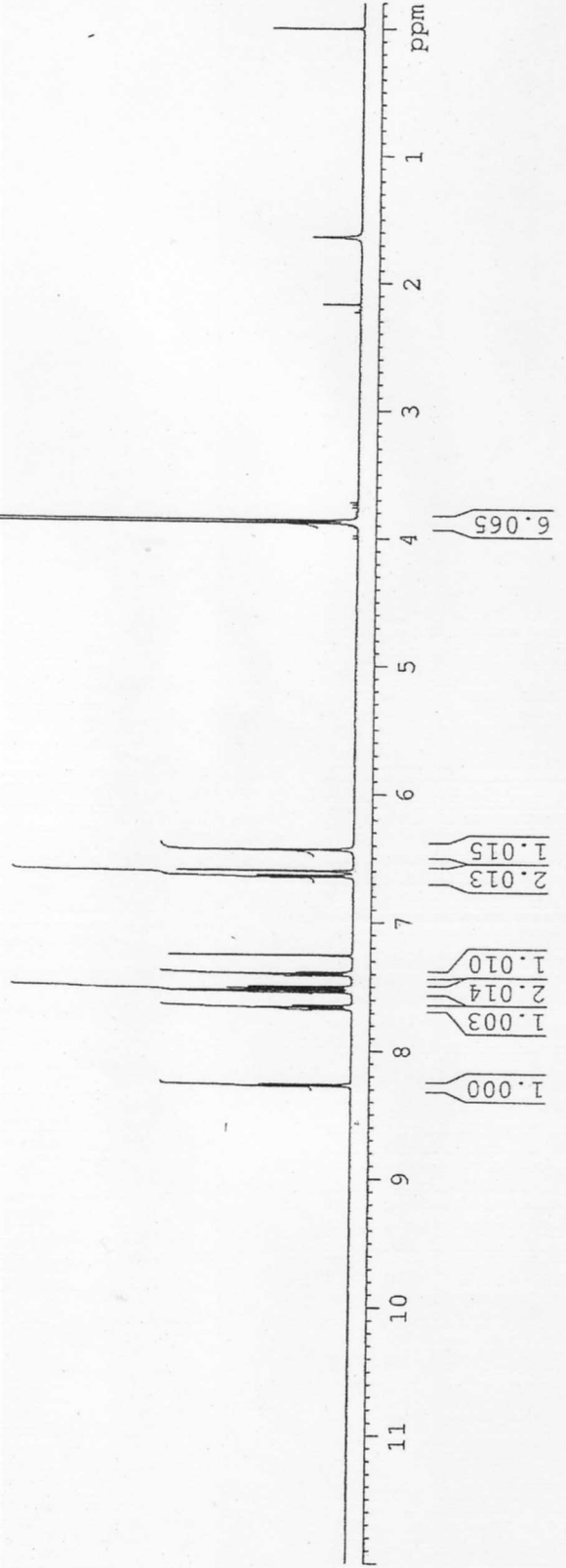


SOLVENT CDCL3
 NS 16
 DS 0
 SWH 11029.412 Hz
 FIDRES 0.382381 Hz
 AQ 1.3076447 sec
 RG 812
 DW 45.333 usec
 DE 6.00 usec
 TE 298.2 K
 D1 1.50000000 sec
 TD0 1

==== CHANNEL f1 =====
 NUC1 1H
 P1 8.30 usec
 PL1 -1.00 dB
 PL1W 15.17893314 W
 SF01 600.3340821 MHz

F2 - Processing parameters
 SI 32768
 SF 600.3300144 MHz
 WDW EM
 SFE 0
 LB 0.30 Hz
 GB 0
 PC 1.00

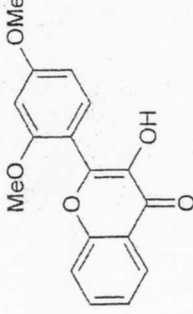
ICC-13
 1H IN CDCL3
 AVANCE-600
 28-2-12





INDOFINE Chemical Company, Inc.
 121 STRYKER LANE
 BLDG. 30, SUITE 1
 HILLSBOROUGH, NJ 08844

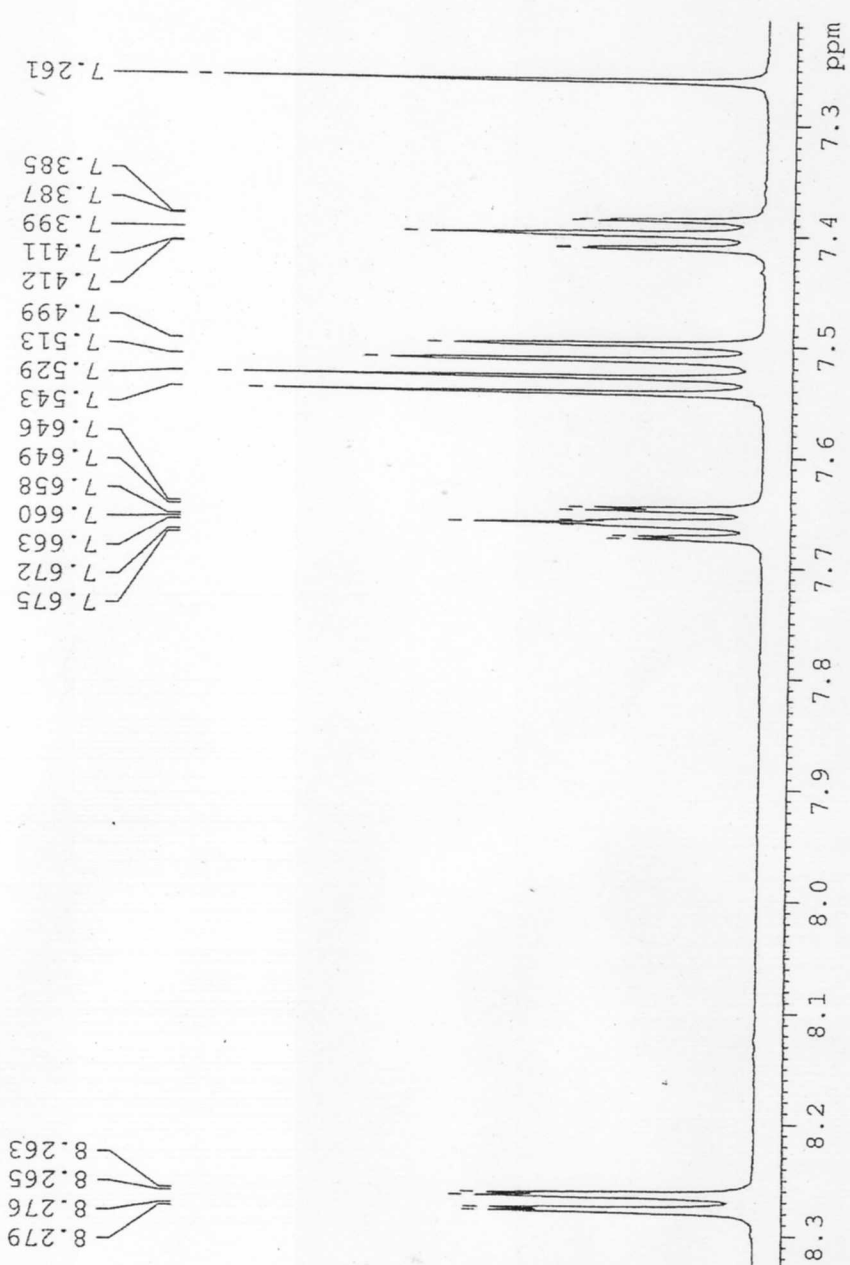
Catalog No.: 22-211
 Product name: 2'-4'-Dimethoxy-3-hydroxyflavone
 Lot No.: 98139



SOLVENT CDC13
 NS 16
 DS 0
 SWH 11029.412 Hz
 FIDRES 0.382381 Hz
 AQ 1.3076447 sec
 RG 812
 DW 45.333 usec
 DE 6.00 usec
 TE 298.2 K
 D1 1.50000000 sec
 TD0 1

ICC-13
 1H IN CDCL3
 AVANCE-600
 28-2-12

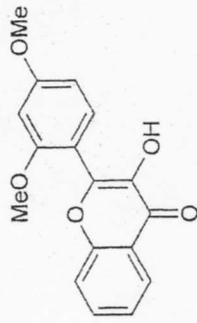
==== CHANNEL f1 =====
 NUC1 1H
 P1 8.30 usec
 PL1 -1.00 dB
 PL1W 15.17893314 W
 SF01 600.3340821 MHz
 F2 - Processing parameters
 SI 32768
 SF 600.3300144 MHz
 WDW EM
 SSB 0
 LB 0.30 Hz
 GB 0
 PC 1.00





INDOFINE Chemical Company, Inc.
 121 STRYKER LANE
 BLDG. 30, SUITE 1
 HILLSBOROUGH, NJ 08844

Catalog No.: 22-211
 Product name: 2'-4'-Dimethoxy-3-hydroxyflavone
 Lot No.: 98139



SOLVENT CDC13
 NS 16
 DS 0
 SWH 11029.412 Hz
 FIDRES 0.332381 Hz
 AQ 1.3076447 sec
 RG 812
 DW 45.333 usec
 DE 6.00 usec
 TE 298.2 K
 D1 1.50000000 sec
 TD0 1

==== CHANNEL f1 =====
 NUC1 1H
 P1 8.30 usec
 PL1 -1.00 dB
 PL1W 15.17893314 W
 SFO1 600.3340821 MHz
 F2 - Processing parameters
 SI 32768
 SF 600.3300144 MHz
 WDW EM
 SSB 0
 LB 0.30 Hz
 GB 0
 PC 1.00

ICC-13
 1H IN CDCL3
 AVANCE-600
 28-2-12

